

WHISTLER VALLEY TRAIL MAP

KNOW BEFORE YOU GO

THIS IS A TWO-WAY, MULTI-USE TRAIL

Respect other users. Share the trail. Keep right. Pass on the left. Class 1 electric assist e-bikes to 32 km/hr. maximum permitted, all others are not.

IN CASE OF EMERGENCY: PHONE 911

DOGS

Dogs must be leashed unless in a dog off-leash park. Dog owners are required to pick up and properly dispose of dog waste. Bag it and bin it.

Learn more at whistler.ca/dogs

FIRESMART

Whistler is surrounded by beautiful forests. Enjoy all they have to offer but know that Whistler is a high-risk wildfire area. Do your part to prevent wildfires. Check fire danger ratings, follow campfire bans, and extinguish all smoking materials.

To report a wildfire or irresponsible behaviour call *5555
Learn more at whistler.ca/fire or call 1.888.3.FOREST

BEAR SAFETY

- ◆ Never approach a bear.
- ◆ Never run away from a bear. Stay calm & back away slowly.
- ◆ Ensure bears never have access to food or garbage.
- ◆ Use bear-proof garbage bins.
- ◆ Carry out ALL garbage when using parks and trails.
- ◆ Don't leave food or food packaging in vehicles.
- ◆ Keep dogs on-leash.

Learn more at whistler.ca/bears

PARK SHUTTLES AND WHISTLER TRANSIT

Free Summer Park Shuttle to get to Rainbow Park, Meadow Park, Lost Lake Beach and Rainbow Trail Head. Shuttle operates on weekends and statutory holidays throughout the summer. Pick up at Gondola Transit Exchange and Blackcomb Way next to Olympic Plaza.

The Whistler Transit System services all neighbourhoods in Whistler with free service within Whistler Village, the Upper Village, and Benchlands. All other neighbourhoods are accessed by a fare system and route through Gondola Transit Exchange. All buses are equipped with bike racks (capacity two per bus). Learn more at bctransit.com/whistler or by calling 604.932.4020.

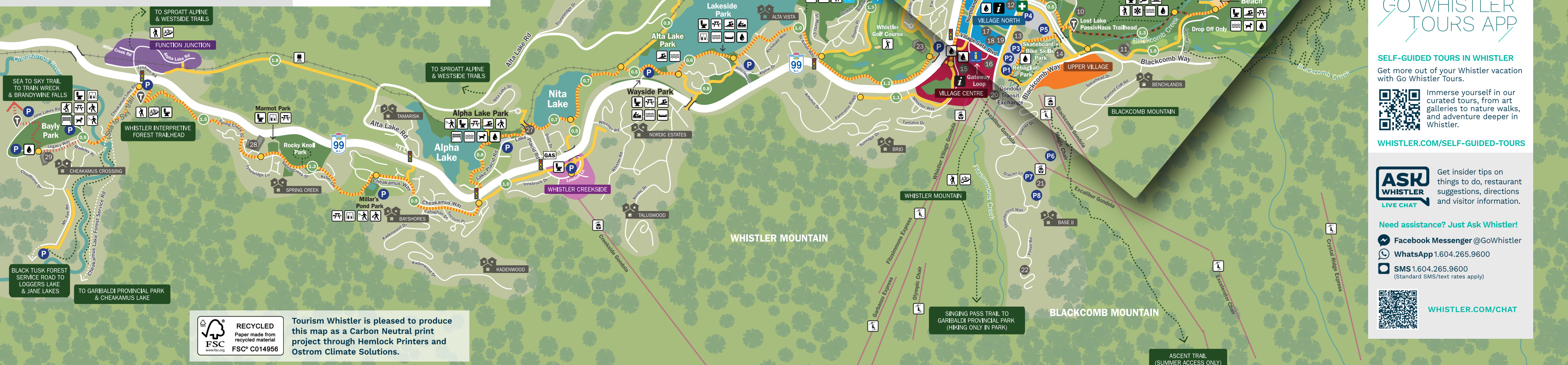
LEGEND

- ROADWAY
- GRAVEL ROAD
- PAVED VALLEY TRAIL
- VALLEY TRAIL ON ROAD
- WIDE GRAVEL TRAIL
- OTHER TRAILS
- SEA TO SKY TRAIL
- GONDOLA / SKI LIFT
- RIVERS AND CREEKS
- RAILWAY
- NEIGHBOURHOOD
- DISTANCE IN KILOMETRES
- TRAIL HEAD
- PARKING AREA
- EMERGENCY HEALTH SERVICES
- PUBLIC WASHROOMS
- VISITOR CENTRE
- VILLAGE HOST
- VIEWPOINT
- PICNIC AREA
- GOLF COURSE
- WINTER ACTIVITIES
- HIKING
- PLAYGROUND
- BIKING
- MOUNTAIN BIKING
- CANOEING
- SWIMMING
- SOCCER
- TENNIS
- BASEBALL
- BASKETBALL
- VOLLEYBALL
- LAKE, RIVER ACCESS
- WATERCRAFT RENTALS
- DOG OFF-LEASH PARK
- GONDOLA
- SKI LIFT
- RAILWAY
- CHURCH
- WATER BOTTLE FILL STATION
Only available in summer

MAP DIRECTORY

- ### INFORMATION
- 16 Whistler Visitor Centre
- ### EMERGENCY SERVICES
- 12 Whistler Health Care Centre
- ### EDUCATION CENTRES
- 24 Myrtle Phillip Community School
 - 28 Spring Creek Community School
 - 1 Whistler Secondary Community School
- ### RECREATIONAL & CULTURAL CENTRES
- 13 Audain Art Museum
 - 21 bubly™ Tube Park
 - 11 Chateau Whistler Golf Club
 - 4 Float Plane Dock
 - 10 Lost Lake PassivHaus
 - 19 Maury Young Arts Centre
 - 2 Meadow Park Sports Centre
 - 3 Nicklaus North Golf Clubhouse
 - 26 Point Artist Run Centre
 - 6 Riverside Parkbridge Campground
 - 14 Squamish Lil'wat Cultural Centre
 - 8 Spruce Grove Field House
 - 29 Whistler Athlete's Centre
 - 15 Whistler Conference Centre
 - 7 Whistler Disc Golf Course
 - 23 Whistler Golf Course Clubhouse
 - 17 Whistler Museum
 - 18 Whistler Public Library
 - 22 Whistler Sliding Centre
- ### LANDMARKS
- 20 Gondola Transit Exchange
 - 9 Nesters Commercial Area
 - 31 Rainbow Commercial Area
 - 5 Scandivave Spa
 - 27 Train Station
 - 25 Whistler Catholic Church
 - 30 Whistler Community Church

SEE THE BACK FOR ENLARGED AREA OF VALLEY SINGLETRACK



DISCOVER THE GO WHISTLER TOURS APP

SELF-GUIDED TOURS IN WHISTLER

Get more out of your Whistler vacation with Go Whistler Tours.

Immerse yourself in our curated tours, from art galleries to nature walks, and adventure deeper in Whistler.

WHISTLER.COM/SELF-GUIDED-TOURS

ASK WHISTLER LIVE CHAT

Get insider tips on things to do, restaurant suggestions, directions and visitor information.

Need assistance? Just Ask Whistler!

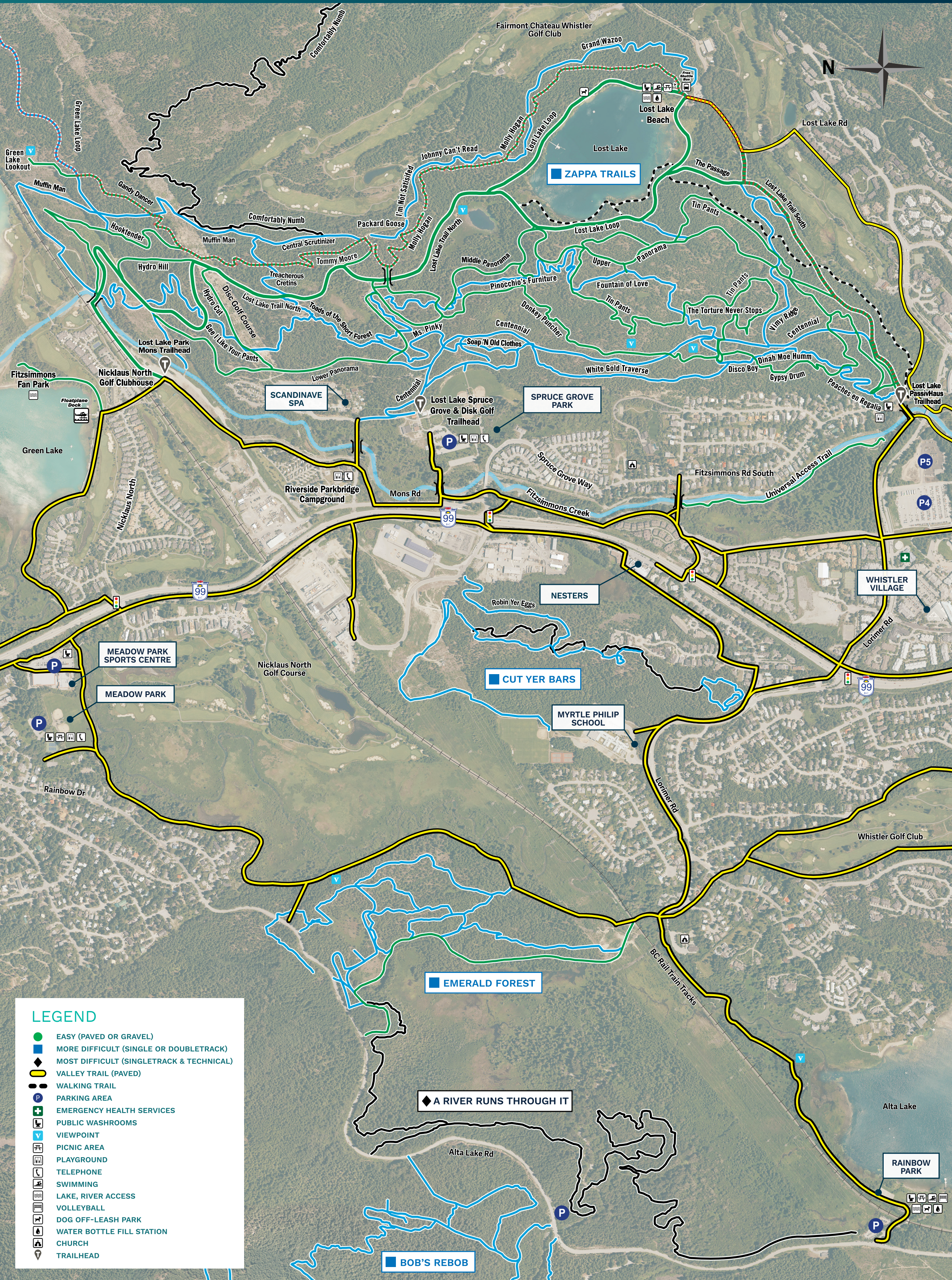
- Facebook Messenger @GoWhistler
- WhatsApp 1.604.265.9600
- SMS 1.604.265.9600 (Standard SMS/text rates apply)

WHISTLER.COM/CHAT

RECYCLED Paper made from recycled material FSC® C014956

Tourism Whistler is pleased to produce this map as a Carbon Neutral print project through Hemlock Printers and Ostrom Climate Solutions.

WHISTLER VALLEY SINGLETRACK



LEGEND

- EASY (PAVED OR GRAVEL)
- MORE DIFFICULT (SINGLE OR DOUBLETACK)
- ◆ MOST DIFFICULT (SINGLETRACK & TECHNICAL)
- VALLEY TRAIL (PAVED)
- WALKING TRAIL
- P PARKING AREA
- + EMERGENCY HEALTH SERVICES
- ♿ PUBLIC WASHROOMS
- v VIEWPOINT
- ☺ PICNIC AREA
- 🎡 PLAYGROUND
- ☎ TELEPHONE
- 🏊 SWIMMING
- 🌊 LAKE, RIVER ACCESS
- 🏐 VOLLEYBALL
- 🐕 DOG OFF-LEASH PARK
- 💧 WATER BOTTLE FILL STATION
- ⛪ CHURCH
- 📍 TRAILHEAD